

Technical Data

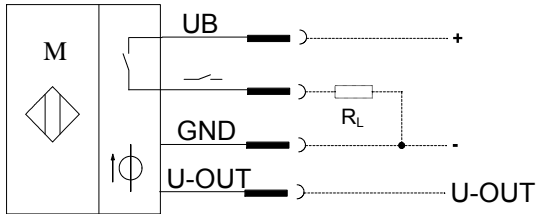
Analogue block

Series C74

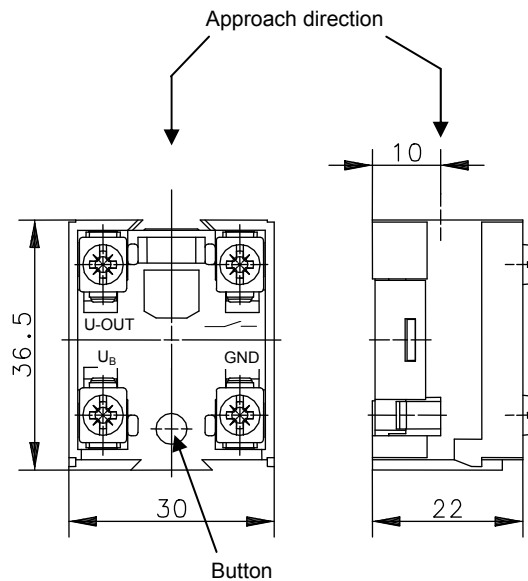
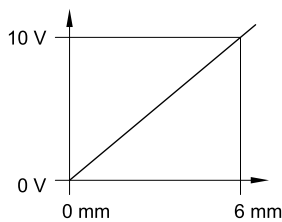
Description **C74-ANALOG 0-10V**

Article number **6613299077**

Wiring diagram



Characteristic



Identifying characteristics in accordance with EN 60947-5-2

Electrical data

Rated operating voltage range	U_B	12 - 26 V DC
Voltage output		0 - 10 V
Linearity errors		$\pm 2,5\%$ from the end value (10 V), U_B and temperature at a constant level
Temperature errors		$\pm 10\%$ U_B constant level
Repetition accuracy	R	$\pm 2\%$ from the end value (10 V), U_B and temperature at a constant level
Switching output	S	PNP NO; (teachable)
Hysteresis	H	$\approx 10\%$
Idle current	I_o	< 25 mA
Voltage drop	U_d	$\leq 1,6$ V
Utilization category		DC 12
Rated operational currents	I_e	200 mA
Minimum operating current (Switching element)	I_m	1 mA
Residual current	I_r	< 0,1 mA
Switching element		permanently short-circuit and overload protected
Analogue output		permanently short-circuit and overload protected
Short-circuit protection type		synchronising
Switching frequency		max. 100/min.
Reverse polarity		yes
Readiness delay	t_v	< 50 ms

Electromagnetic compatibility (EMC) ¹⁾

Immunity to Electrostatic Discharge	IEC 61000-4-2	(only in installed condition)
Interference resistance against high-frequency electromagnetic fields	IEC 61000-4-3	
Immunity to fast transient interference variables (bursts)	IEC 61000-4-4	
Immunity to conducted interference induced by radio frequency fields	IEC 61000-4-6	
Immunity against magnetic fields with power frequency	IEC 61000-4-8	
Conducted disturbances/Interference voltage/Interference currents	EN 55011 class B	
Radiated disturbances/electric field strength	EN 55011 class B	

This document will not become the contractual basis; the details included herein do not constitute any descriptions of expected conditions, so that warranties/claims for defects on account of possible variations of the actual qualities from the qualities described herein are explicitly excluded. All rights reserved. Specifications subject to change without notice!

Date of issue: 05.03.2013 / Page 1 of 2
Document: 6613299077_en / Status: 4 / 0110-13

Mechanical Data

Actuating travel	6 mm
Actuating force	2,3 N
Enclosure	Thermoplastic, glass fibre-reinforced
Actuation	Plunger internally, Ø8
Ambient temperature	-30 °C ... +80 °C
Mechanical life	10 x 10 ⁶ switching operations
Type of connection	4 Screw connections (M3,5)
Conductor cross sections	single-wire 0.5 – 1.5 mm ² or stranded wire with wire end ferrule
Installation position	any
Protection class	IP00 acc. to EN 60529

Accessories

1 x mounting adapter
1 x impact pin
installation material

Actuation

The actuation is only started from approach direction.

EU Conformity¹⁾

acc. to directive 2004/108/EC

General Information

Due to the open structure of the analogue block, there is no special protection against infiltration of water and against contact with voltage-carrying parts!

The reliable switching function is only given in BERNSTEIN switching devices!

¹⁾To be conform with the EMV guideline (2004/108/EC) a shielded connection cable has to be used.