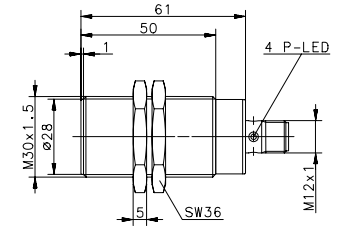
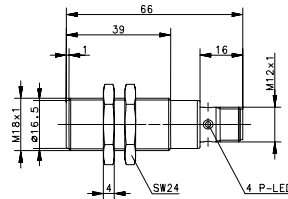
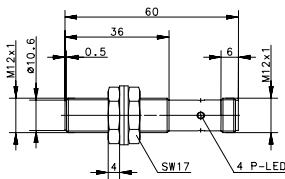
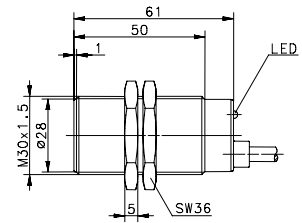
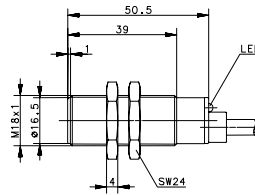
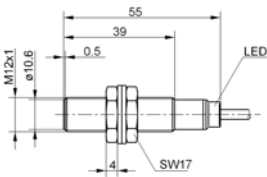


Technical Data

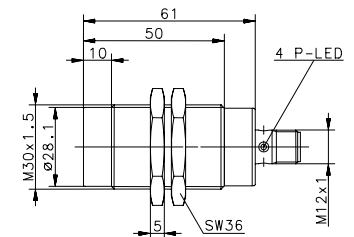
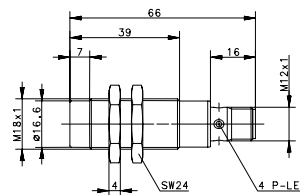
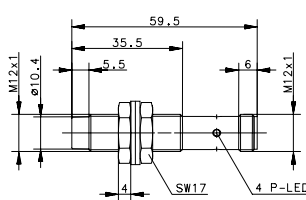
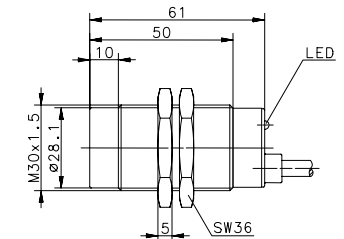
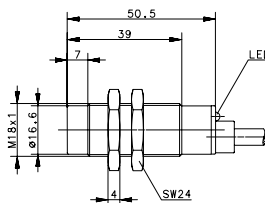
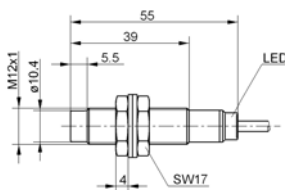
Inductive Proximity Switch



Series M12, M18 and M30



Mounting flush	Type M12x1		Type M18x1		Type M30x1,5	
	2m cable	M12 male plug	2m cable	M12 male plug	2m cable	M12 male plug
Sn / Sa	2mm / 0...1,6mm		5mm / 0...4,1mm		10mm / 0...8,1mm	
f	800Hz		500Hz		300Hz	
PNP	6522903009	6522943011	6522905013	6522905015	6522907017	6522907019



Mounting non flush	Type M12x1		Type M18x1		Type M30x1,5	
	2m cable	M12 male plug	2m cable	M12 male plug	2m cable	M12 male plug
Sn / Sa	4mm / 0...3,2mm		8mm / 0...6,5mm		15mm / 0...12,2mm	
f	400Hz		200Hz		100Hz	
PNP	6522904010	6522944012	6522906014	6522906016	6522908018	6522908020

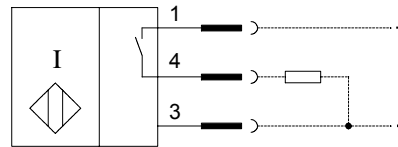
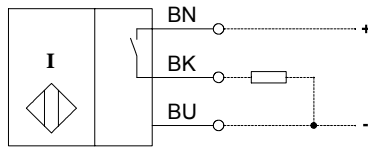
S_n = Rated operating distance / S_a = Assured operating distance
 f = Frequency of operating cycles

This document will not become the contractual basis; the details included herein do not constitute any descriptions of expected conditions, so that warranties/claims for defects on account of possible variations of the actual qualities from the qualities described herein are explicitly excluded. All rights reserved. Specifications subject to change without notice!

Technical Data

Inductive Proximity Switch

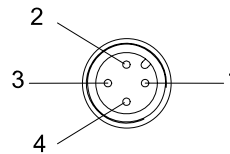
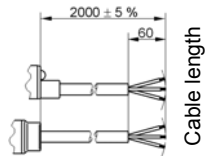
Wiring diagrams



Type

M18, M30

M12



Identifying characteristics in accordance with EN 60947-5-2

Electrical data

Rated operating distance	S_n	see overview
Assured operating distance	S_a	see overview
Switching element function		N.O., Indication LED yellow, Open Collector Output
Repeat accuracy	R	≤ 5%
Differential travel (hysteresis)	H	≈ 10%
Operational voltage range	U_B	10 – 36V DC
Rated insulation voltage	U_i	75V DC
Rated impulse withstand voltage	U_{imp}	500V
Voltage drop	U_d	≤ 1,5V
Utilization category		DC-13
Rated operational current	I_e	≤ 200mA
Off-state current	I_r	≤ 0,3mA
No-load supply current	I_o	≤ 11mA
Short-circuit protection		pulsed
Frequency of operating cycles	f	see overview
Mounting		see overview – flush and non flush
False polarity protection		yes
Time delay before availability	t_v	≤ 50ms

Electromagnetic compatibility (EMC)

Electromagnetic field test	IEC 61000-4-3
Electrostatic discharge test	IEC 61000-4-2
Electrical fast transient immunity test (Burst)	IEC 61000-4-4
Radiated disturbance field strength	EN 55011

Mechanical Data

Enclosure	brass, nickel plated
Front cap	PA6.6 black
End cap	M12x1 = PA6.6 black M18x1 and M30x1,5 = PA12 black
Ambient air temperature	-25°C...+60°C
Type of protection (acc. to EN 60529; DIN VDE 0470 T1)	Cable versions: IP67 Male plug versions: IP 67 (only with screwed plug-in-connector)
Indication	Output LED yellow Cable 3x0,14mm ² x 2m, PVC-outer jacket black (M8x1, M12x1) Cable 3x0,5mm ² x 2m, PVC-outer jacket black (M18x1, M30x1,5)
Termination type	Male plug M8x1, brass, nickel plated Male plug M12x1, PA
For attachment	Hexagon nut stainless steel or brass, nickel plated M12x1 additional with 2 x toothed washer

EG-Konformität

acc. to Directive 94 / 9 / EG

Label

ATEX	II 3G Ex nA IIC T6 X II 3D Ex tD IP67 T60°C X
------	--

This document will not become the contractual basis; the details included herein do not constitute any descriptions of expected conditions, so that warranties/claims for defects on account of possible variations of the actual qualities from the qualities described herein are explicitly excluded. All rights reserved. Specifications subject to change without notice!