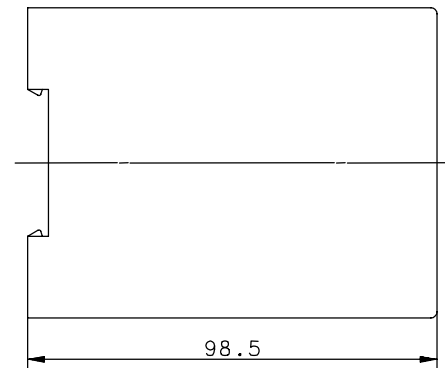
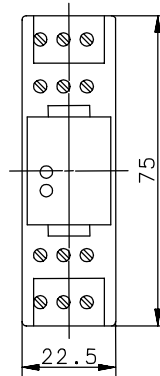
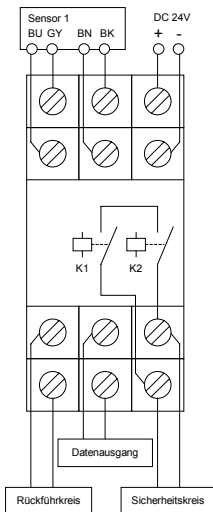


Series MÜZ-102

Type designation **MÜZ-102/D24-FL-DA-EXT**

Item number **6392701306**

Wiring diagram



Operating data

Rated operational voltage 80-81	U_e	DC 24V
Operational voltage range	U_B	DC 20 ... 27V
Rated operational current	I_e	60mA
Rated insulation voltage	U_i	AC 250V

Output data / Relay output

	Safety output 7.3 – 7.4	Monitoring output 9.1 – 9.2
Max. switching voltage	AC 250V	AC 60V / DC 24V
Max. switched current	8A	0,5A / 1,0A
Max. switching capacity	1700VA	30VA / 24W
Utilization category	AC 15: 230V / 3A DC 13: 24V / 2A	-
Output function	N.O. Series connection of two 2 Relays with positively guided contacts	N.C. -
Material of contacts	AGNi10 + 0,2µm Au	-
Feedback control loop 60-61	Control of switching status of power-contactor	

Operating and environmental conditions

Temperature range: Ambient operating temperature		0°C ... +55°C
Transport and storage temperature		-25°C ... +70°C
Type of protection		IP 20 according to IEC 529, EN 60529 to the installation in switchgear cabinet with IP54
Pollution degree		3 nach EN 60947-1
Rated impulse withstand voltage	U_{imp}	4kV according to EN 60947-1
Enclosure		Material PC Quick snap for mounting rails according to DIN50022 Screw terminals for wires (litz wire) from 0,25mm ² to 2,5mm ²
Indication LED red		Sensor 1; after operation is the LED out
LED green		Supply voltage ON
EMV (complete system)		EN 60947-5-3

This document will not become the contractual basis; the details included herein do not constitute any descriptions of expected conditions, so that warranties/claims for defects on account of possible variations of the actual from the here described condition are excluded. Subject to modifications and amendments.

Date of issue: 21.03.2005 / Page 1 of 1
Document: 6392701306_en / Last update: 1 / 0004-05