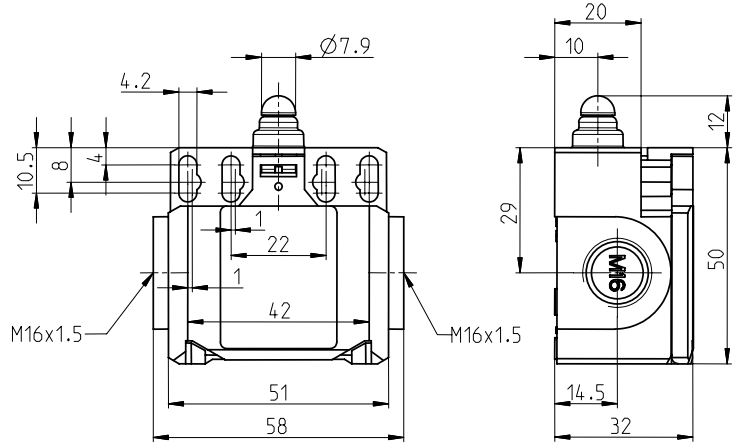
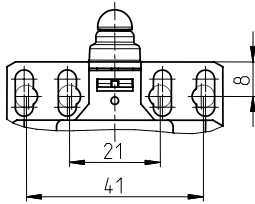


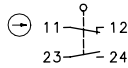
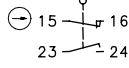
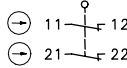
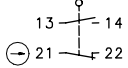
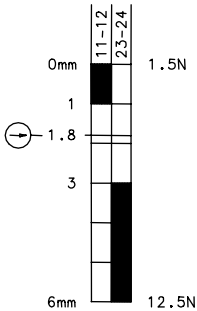
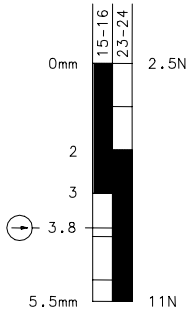
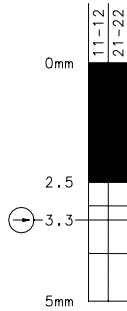
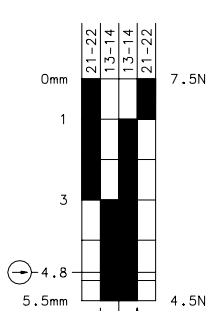
Technical Data



Plastic bodied limit switch

Series Biggy 2, actuation by plunger

Fixed positioning for safety applications
 Mounting screw M5 according to DIN 912 or DIN EN ISO 4762



Description	BI2-U1Z W	BI2-UV1Z W	BI2-A2Z W	BI2-SU1Z W
Article number	6085103100	6085303115	6085803116	6085153107
Contact type	1 N.C. 1 N.O.	1 N.C. 1 N.O.	2 N.C.	1 N.O. 1 N.C.
	U1Z	UV1Z	A2Z	SU1Z
	Zb	Zb	Zb	Zb
Operating symbol				
	Slow-action	Slow-action	Slow-action	Snap-action
Operating diagram				

  Tolerance:
 Ein Aus Operating point $\pm 0,25$ mm;
 Actuating force ± 10 %

This document will not become the contractual basis; the details included herein do not constitute any descriptions of expected conditions, so that warranties/claims for defects on account of possible variations of the actual qualities from the qualities described herein are explicitly excluded. All rights reserved. Specifications subject to change without notice!

Technical Data

Plastic bodied limit switch

Electrical data			
Rated insulation voltage	U_i	400 V AC	
Conv. thermal current	I_{the}	10 A	
Rated operational voltage	U_e	240 V AC	
Rated operational voltage acc. to $cCSA_{US}$	U_e	300 V AC	
Utilization category		AC15, U_e / I_e 240V/3A	
Direct opening action		⊖	acc. to IEC/EN 60947-5-1, Annex K
Short-circuit protective device	U1Z, UV1Z	Fuse	10A gL/gG
	A2Z	Fuse	6A gL/gG
	SU1Z	Fuse	2A gL/gG
Protection class		II, totally insulated	

Mechanical data			
Enclosure		Thermoplastic, glass fibre reinforced	
Cover		Thermoplastic, glass fibre reinforced	
Actuator		Plunger (Thermoplastic)	
Ambient air temperature		-30 °C ... +80 °C	
Mechanical life	U1Z, UV1Z, SU1Z	10 x 10 ⁶ switching cycles	
	A2Z	1 x 10 ⁶ switching cycles	
Switching frequency		≤ 100/min	
Assembly		2 x M4 / 2 x M5 / 2 x M3 front mounting	
Connection		4 screw connections (M3,5)	
Conductor cross-sections		Solid: 0,5 ... 1,5 mm ²	
		Litz wire with ferrules: 0,5 ... 1,5 mm ²	
Cable entrance		2x M16x1,5	
Weight		≈ 0,08 kg	
Installation position		operator definable	
Protection type		IP65 acc. to EN 60529; DIN VDE 0470 T1	

Actuation

The push bolt actuator is mainly intended to be actuated along its axis.
Side actuation will considerably reduce switch life.

Standards
VDE 0660 T100, DIN EN 60947-1, IEC 60947-1
VDE 0660 T200, DIN EN 60947-5-1, IEC 60947-5-1

EC Conformity
CE

Approvals
$cCSA_{US}$ A300, Q300

Notes

The degree of protection specified (IP code) applies only to a properly closed protective guard and the use of an equivalent cable gland with adequate cable.

This document will not become the contractual basis; the details included herein do not constitute any descriptions of expected conditions, so that warranties/claims for defects on account of possible variations of the actual qualities from the qualities described herein are explicitly excluded. All rights reserved. Specifications subject to change without notice!