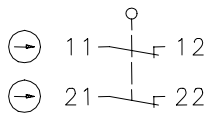


Series GC

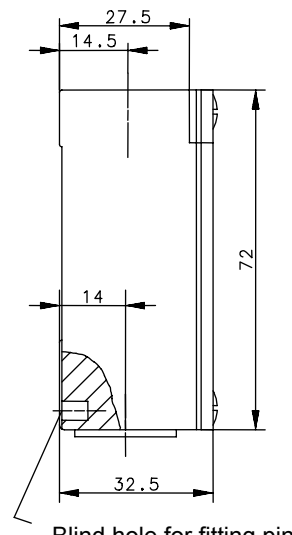
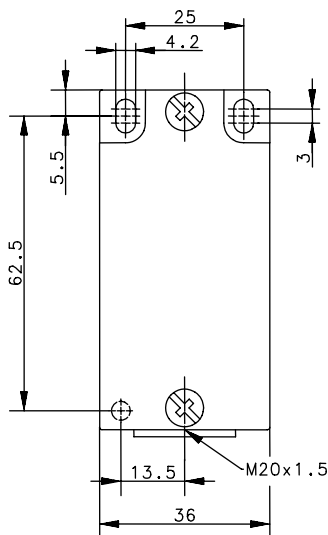
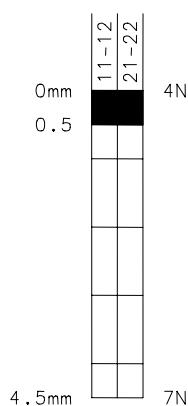
Description **GC-A2Z O.BETG**

Article number **6021800408**

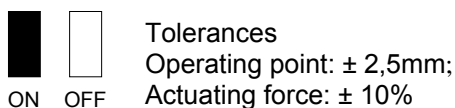
Operating symbol



Operating diagram



Blind hole for fitting pin
Ø4; 5.5 deep



Electrical data

Max. voltage		400V AC
Max. enduring current	I_{th}	6A
Short-circuit protective device		Fuse 6A gL/gG
Protection class		I

This document will not become the contractual basis; the details included herein do not constitute any descriptions of expected conditions, so that warranties/claims for defects on account of possible variations of the actual qualities from the qualities described herein are explicitly excluded. All rights reserved. Specifications subject to change without notice!

Date of issue: 07.12.2007 / Page 1 of 2
Document: 6021800408_en.doc / Last update: 1 / 2764-07

Mechanical data	
Enclosure	Die-cast aluminium
Cover	Sheet aluminium
Actuator	without
Ambient air temperature	-30°C ... +80°C
Contact type	2 NC (B)
Mechanical life	3 x 10 ⁶ operating cycles
Switching frequency	≤ 100 / min.
Assembly	2 x M4
Connection	4 screw terminals (M3)
Conductor cross-sections	Solid: 0,5 ... 1,5mm ² Litz wire with ferrules: 0,5 ... 1,5mm ²
Cable entrance	1 x M20x1,5
Weight	≈ 0,12 kg
Installation position	Operator definable
Protection type	IP20 acc. to IEC/EN 60529
Standards	VDE 0660 T100, DIN EN 60947-1, IEC 60947-1 VDE 0660 T200, DIN EN 60947-5-1, IEC 60947-5-1
EU Conformity	CE

Notes

The degree of protection (IP code) specified applies solely to a property closed cover and the use of an equivalent cable gland with adequate cable.